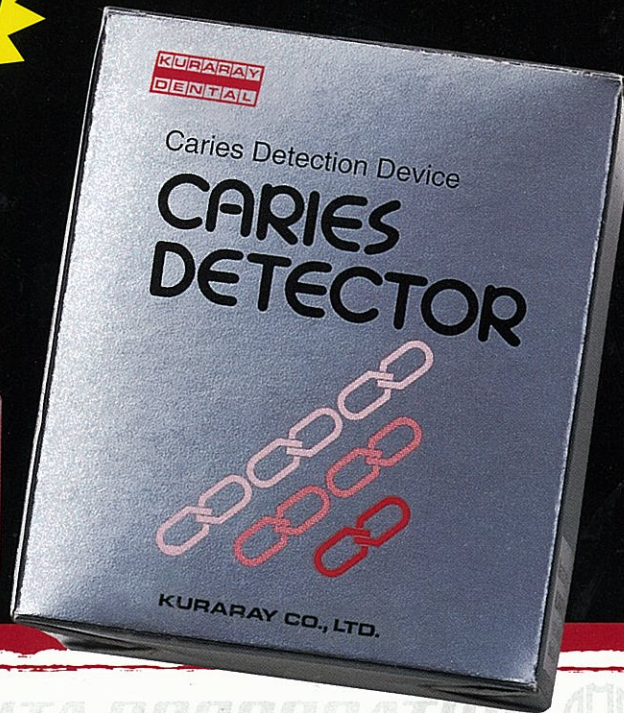


# prob•lem ('præb-ləm) *n* Detecting Outer Caries

## so•lu•tion (sə-'lü-shən) *n*

**NEW!**



**There are two layers of carious dentin!  
Do you know how to detect them properly?**

**To find out how contact your local MMDI dealer or fax 81-6-380-0585.**

- **THE ORIGINAL CARIES DETECTOR**
- **NEW QUANTITY AND LESS COST**
- **CONSERVES TOOTH STRUCTURE**
- **DECREASES NEED FOR LOCAL ANESTHESIA**

**HENRY SCHEIN®  
SHALFOON**

0800 808 855  
[www.henryscheinshalfoon.co.nz](http://www.henryscheinshalfoon.co.nz)



**J. MORITA CORPORATION**

33-18, 3-chome, Tarumi-cho  
Suita City, Osaka 564 Japan  
Telephone: 81-6-380-1521  
Fax: 81-6-380-0585  
<http://www.jmorita.com>

© 1998 J. Morita Corp.

# Confirm Your Clinical Diagnosis With...

## *CARIES DETECTOR*

Photographs by Jeffrey C. Hoos, D.M.D., F.A.G.D.

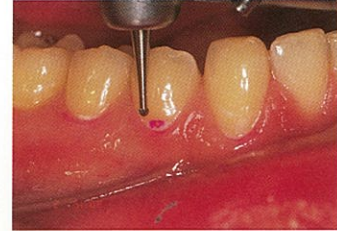
In addition to your expert clinical judgement, Caries Detector confirms your clinical diagnosis and ensures all the caries is removed. CARIES DETECTOR by J. Morita Corporation is the original caries detecting material with 18 years of clinical use. It clinically differentiates between the tissue that should be removed from that which should be preserved. Pictured below are four examples of the many clinical uses of CARIES DETECTOR.



Decalcification or Caries?



Application of Caries Detector



Cervical caries detected only on #28



Traditional crown preparation appears to be caries-free



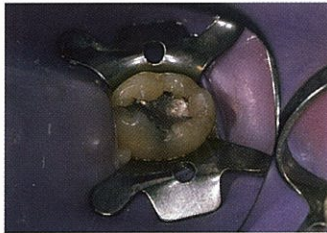
After application: Visible caries detected, preventing possible sensitivity after crown cementation



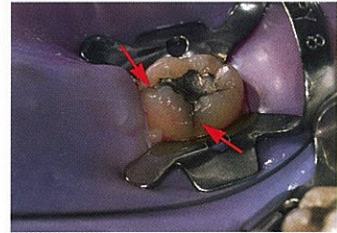
After complete caries removal



Symptom: biting pain



Close-up of only restoration in patient's mouth



Fractures visible after application of Caries Detector



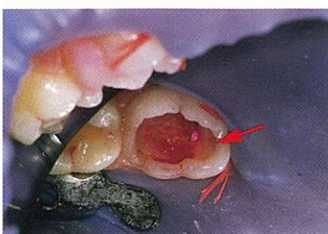
Patient symptoms: Hot and Cold sensitivity



Restorations removed and Caries Detector applied



Initial caries detected at first application



2nd application: more decay found on walls of preparation



Final preparation: caries free



Caries Detector 2 x 6ml bottles. Item#: (281220)